

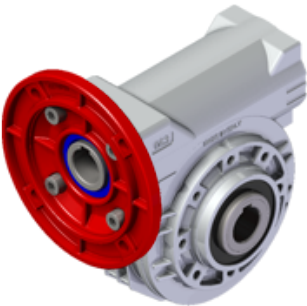
P63AFB06C0-TB3-

Price

Lead time

Configuration

| | |
|--------------------|---------------------|
| Type: | P |
| Size: | 63A |
| Input: | 90 B14 ø140 |
| Output shaft/bore: | Standard ø28 |
| Mounting: | FB |
| Mounting position: | B3 |
| Input bore: | - |
| Coupling: | - |



Technical data

| | |
|------------------------------|-------------------------------|
| Input rpm (n_1): | 1400 min⁻¹ |
| Output rpm (n_2): | 46.67 min⁻¹ |
| Ratio (i): | 30.00 (06) |
| Nominal power (P_{1R}): | 1.30 kW |
| Nominal torque (M_{2R}): | 189 Nm |
| Dynamic efficiency (RD): | 74% |

Selection

| | |
|-----------------------------|----------------|
| Motor power (P_{1M}): | 1.10 kW |
| Output torque (M_{2M}): | 167 Nm |
| Service factor (f.s.): | 1.1 |

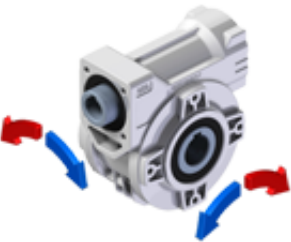
Lubrication

| | |
|---------------|------------------------|
| Oil quantity: | 0.40l |
| AGIP: | Telium VSF 320 |
| SHELL: | Omala S4 WE 320 |

On our website

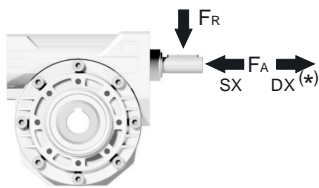
| | |
|---------------------------|--------------------------|
| Features | Irreversibility |
| How to order | Thermal limit |
| Dimension | Atex certification |
| Accessories/options | Installation check list |
| Electric motors | Spare parts list |
| Selection guide - fs | Complete catalogue |
| Mounting pos. - lubricant | Selection by power (xls) |
| Calc. the overhung load | |

Direction of rotation



Axial and radial loads

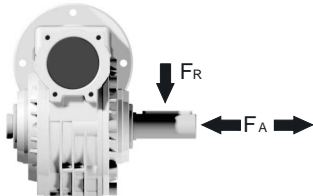
Input shaft



| n_2 (min ⁻¹) | FA (N) | FR (N) |
|-------------------------------|-----------|-----------|
| 1400 | 90 | 450 |

*Strong axial loads in the DX direction are not allowed

Output shaft



| n_2 (min ⁻¹) | FA (N) | FR (N) |
|-------------------------------|-----------|-----------|
| 200 | 360 | 1800 |
| 150 | 400 | 2000 |
| 100 | 460 | 2300 |
| 75 | 500 | 2500 |
| 50 | 600 | 3000 |
| 25 | 700 | 3800 |
| 15 | 800 | 4000 |

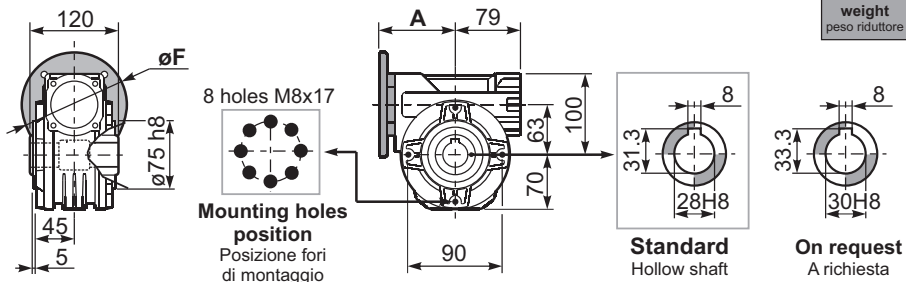
Note

3D dimensions on the Web

P63AFB... Basic wormbox
Riduttore base

Gearbox weight
peso riduttore **6.00 kg**

| M. flanges | Kit code | øF | A |
|----------------|------------|-----|------|
| 63B5 | K063.4.041 | 140 | 99.5 |
| 71B5 | K063.4.042 | 160 | 97.5 |
| 80/90B5 | K063.4.043 | 200 | 99.5 |
| 71B14 | K063.4.047 | 105 | 97.5 |
| 80B14 | K063.4.046 | 120 | 99.5 |
| 90B14 | K063.4.041 | 140 | 99.5 |

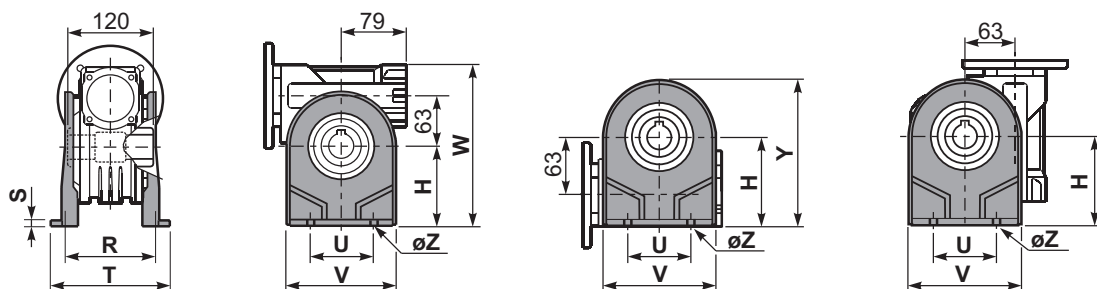


1

P63APA... Feet
Piedini

P63APB... Feet
Piedini

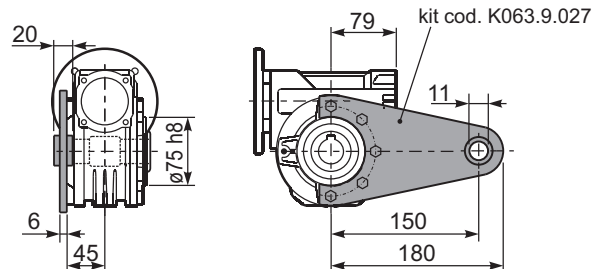
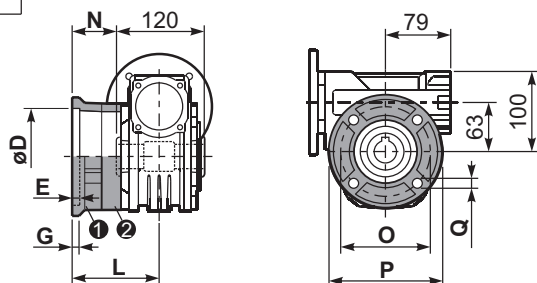
P63APV... Feet
Piedini



| | H | R | S | T | U | V | Y | W | øZ | kit code |
|--------|-----|-----|----|-----|-----|-----|-----|-----|-----|------------|
| type B | 115 | 115 | 12 | 142 | 120 | 156 | 185 | 215 | ø11 | K070.9.022 |
| type S | - | - | - | - | - | - | - | - | - | - |

P63AFC... Output flange
Flangia uscita

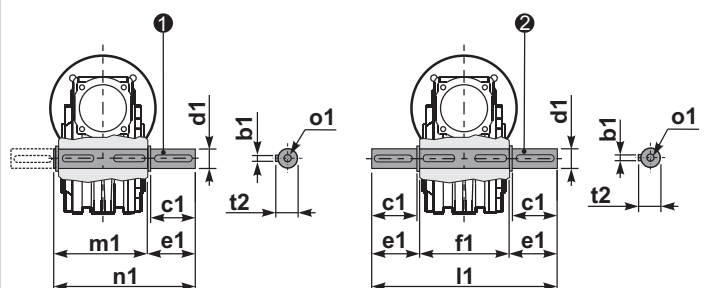
P63ABR... Reaction arm
Braccio di reazione



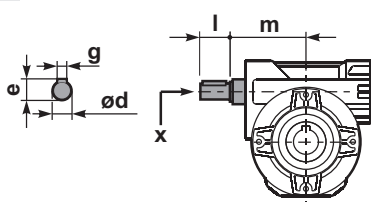
| type B | øD | E | G | L | N | O | P | Q | kit code |
|-----------|---------------------------------------|---|------|------|------|-----|-----|----|------------------------------|
| FC | 130 ^{+0.20} _{+0.15} | 7 | 13 | 85 | 25 | 165 | 200 | 13 | 1 K070.9.010 2 - |
| FL | 130 ^{+0.20} _{+0.15} | 7 | 13 | 111 | 51 | 165 | 200 | 13 | 1 K070.9.010 2 K070.0.200 |
| type S | øD | E | G | L | N | O | P | Q | kit code |
| F1 | 130 ^{+0.20} _{+0.15} | 7 | 13 | 111 | 51 | 165 | 200 | 13 | 1 KS070.9.014 2 - |
| F2 | 115 ^{+0.20} _{+0.15} | 7 | 13 | 116 | 56 | 150 | 175 | 11 | 1 KS063.9.013 2 - |
| F3 | 110 ^{+0.035} ₀ | 5 | 13.5 | 84.5 | 24.5 | 130 | 160 | 11 | 1 KS070.9.011 2 - |

P63A.....S... Single Shaft
Albero lento semplice

P63A.....D... Double Shaft
Albero lento bisp.



R63AFB... Input shaft
Albero in entrata



| | ød | e | g | l | m | x | kit code |
|--------|-------|------|---|----|----|-------|--|
| type B | 18 h6 | 20.5 | 6 | 45 | 93 | M6x16 | 1 K063.5.006 PAM80 2 K063.5.007 PAM90 |
| type S | 19 h6 | 21.5 | 6 | 40 | 93 | M8x20 | 1 KS063.5.008 PAM80 2 KS063.5.009 PAM90 |

| | b1 | c1 | d1 | e1 | f1 | l1 | m1 | n1 | t2 | o1 |
|--------|----|----|--|------|-----|-----|-------|-----|----|-------|
| type B | 8 | 60 | 28 ^{-0.005} _{-0.020} | 63.5 | 120 | 247 | 127.5 | 191 | 31 | M8x20 |
| type S | - | - | - | - | - | - | - | - | - | - |