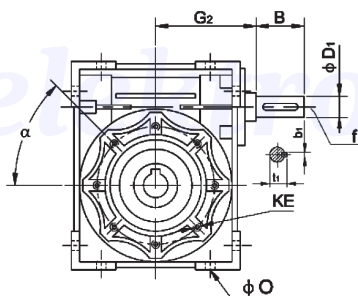
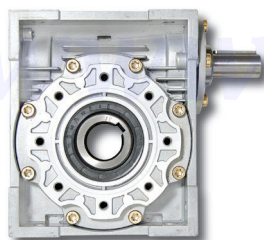
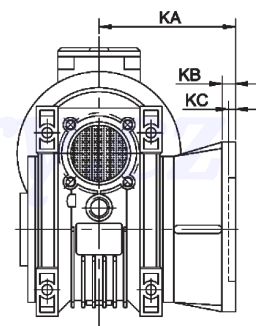
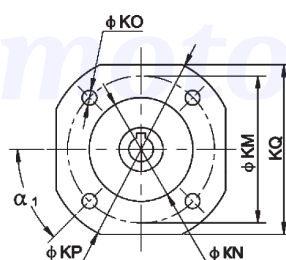


PŘIPOJOVACÍ ROZMĚRY PŘEVODOVEK - DMRV

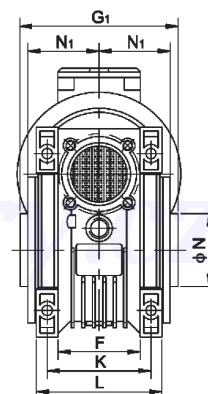
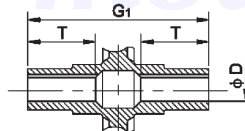
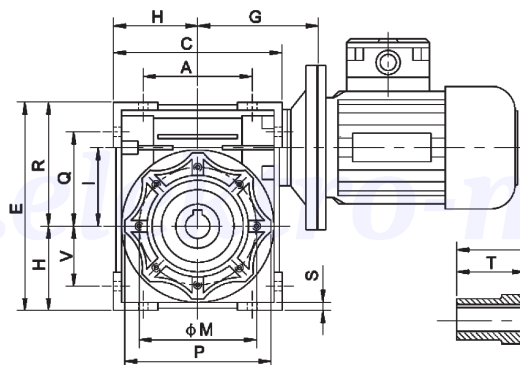
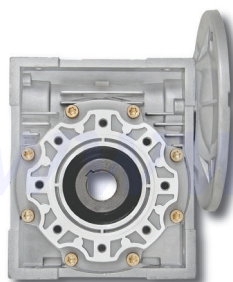
DRV



VÝSTUPNÍ PŘÍRUBA



DMRV



Size	A	B	C	D (H7)	D ₁ (J6)	E	F	G	G ₁	G ₂	H	I	L	M	N (h8)	N ₁	O	P	Q	R
30	54	20	80	14	9	97	32	55	63	51	40	30	56	65	55	29	6.5	75	44	57
40	70	23	100	18 (19)	11	121.5	43	70	78	60	50	40	71	75	60	36.5	6.5	87	55	71.5
50	80	30	120	25 (24)	14	144	49	80	92	74	60	50	85	85	70	43.5	8.5	100	64	84
63	100	40	144	25 (28)	19	174	67	95	112	90	72	63	103	95	80	53	8.5	110	80	102
75	120	50	172	28 (35)	24	205	72	112.5	120	105	86	75	112	115	95	57	11	140	93	119
90	140	50	208	35 (38)	24	238	74	129.5	140	125	103	90	130	130	110	67	13	160	102	135
110	170	60	252.5	42	28	295	—	160	155	142	127.5	110	144	165	130	74	14	200	125	167.5
130	200	80	292.5	45	30	335	—	180	170	162	147.5	130	155	215	180	81	16	250	140	187.5
150	240	80	340	50	35	400	—	210	200	192	170	150	185	215	180	96	18	250	180	230

Size	S	T	V	K	KA			KB			KC			KE	α	α ₁	KM			KN (H8)			KO			KP			KQ			b	b ₁	f	t	t ₁	kg
					F	FB	FL	F	FB	FL	F	FB	FL				F	FB	FL	F	FB	FL	F	FB	FL	F	FB	FL	F	FB	FL						
30	5.5	21	27	44	54.5	—	—	6	—	—	4	—	—	M6X11 (n,4)	0°	45°	68	—	—	50	—	—	6.5 (n,4)	—	—	80	—	—	70	—	—	5	3	—	16.3	10.2	1.2
40	6.5	26	35	60	67	76.5	97	7	9	7	4	5	4	M6X8 (n,4)	45°	45°	87	115	87	60	95	60	9 (n,4)	9.5 (n,4)	9 (n,4)	110	140	110	95	—	95	6(6)	4	—	20.8 (21.8)	12.5	2.3
50	7	30	40	70	90	87.5	120	9	10	9	5	5	5	M8X10 (n,4)	45°	45°	90	130	90	70	110	70	11 (n,4)	9.5 (n,4)	11 (n,4)	125	160	125	110	—	110	8(8)	5	M6	28.3 (27.3)	16.0	3.5
63	8	36	50	85	82	99	112	10	11	10	6	5	6	M8X14 (n,4)	45°	45°	150	165	150	115	130	115	11 (n,4)	11 (n,4)	11 (n,4)	180	200	180	142	—	142	8(8)	6	M6	28.3 (31.3)	21.5	6.2
75	10	40	60	90	111	—	—	13	—	—	6	—	—	M8X14 (n,4)	45°	45°	165	—	—	130	—	—	14 (n,4)	—	—	200	—	—	170	—	—	8(10)	8	M8	31.3 (38.3)	27.0	9
90	11	45	70	100	111	—	—	13	—	—	6	—	—	M10X18 (n,4)	45°	45°	175	—	—	152	—	—	14 (n,4)	—	—	210	—	—	200	—	—	10 (10)	8	M8	38.3 (41.3)	27.0	13
110	14	50	85	115	131	—	—	15	—	—	6	—	—	M10X18 (n,4)	45°	45°	230	—	—	170	—	—	14 (n,4)	—	—	280	—	—	260	—	—	12	8	M10	45.3	31.0	35
130	15	60	100	120	140	—	—	15	—	—	6	—	—	M12X21 (n,4)	45°	22.5°	255	—	—	180	—	—	16 (n,4)	—	—	320	—	—	290	—	—	14	8	M10	46.8	33.0	48
150	18	72.5	120	145	155	—	—	15	—	—	6	—	—	M12X21 (n,4)	45°	22.5°	255	—	—	180	—	—	16 (n,4)	—	—	320	—	—	290	—	—	14	10	M12	53.8	38.0	84