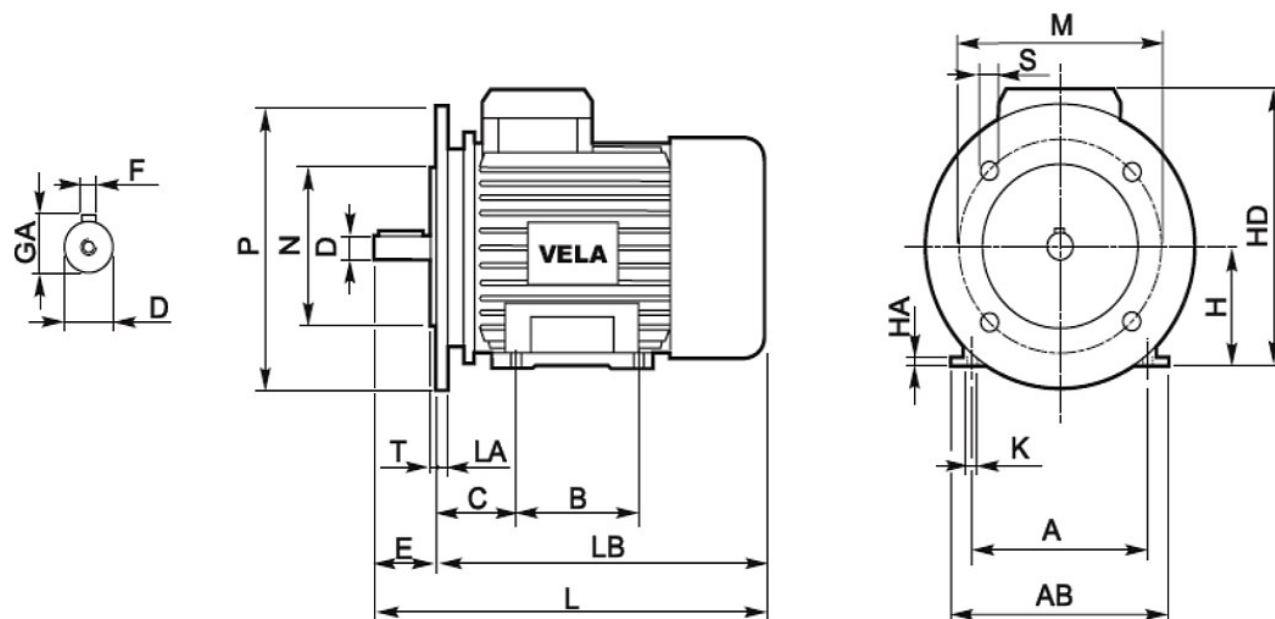
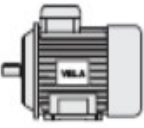


# B3/B5



	B3/B5						B3/B5						
	C	D	E	F	GA	L	S	LA	LB	M	N	P	T
63	40	11	23	4	12.5	210	10	10	187	115	95	140	3.0
71	45	14	30	5	16.0	234	10	10	204	130	110	160	3.5
80	50	19	40	6	21.5	272	12	10	232	165	130	200	3.5
90S	56	24	50	8	27.0	296	12	10	246	165	130	200	3.5
90L	56	24	50	8	27.0	320	12	10	270	165	130	200	3.5
100	63	28	60	8	31.0	347	15	14	287	215	180	250	4.0
112	70	28	60	8	31.0	391	15	14	331	215	180	250	4.0
132S	89	38	80	10	41.0	440	15	14	360	265	230	300	4.0
132M	89	38	80	10	41.0	485	15	14	405	265	230	300	4.0