

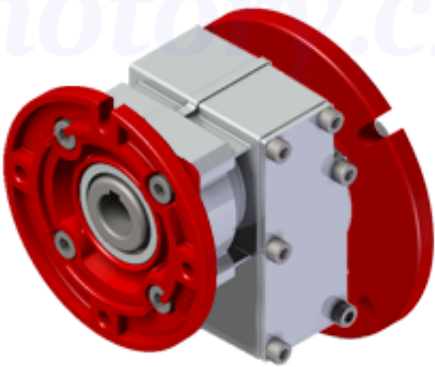
P211A-F07SI-QB3-

Price

Lead time

Configuration

Type:	P
Size:	211A
Input:	71 B14 ø105
Output shaft/bore:	ø14
Mounting:	-F
Output flange:	ø105
Mounting position:	B3
Input bore:	Standard



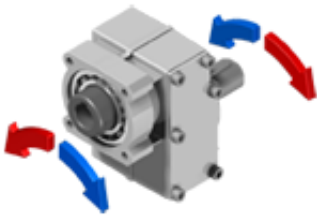
Technical data

Input rpm ( $n_1$ ):	1400 min <sup>-1</sup>
Output rpm ( $n_2$ ):	168.97 min <sup>-1</sup>
Ratio (i):	8.29
Nominal power ( $P_{1R}$ ):	0.36 kW
Nominal torque ( $M_{2R}$ ):	20 Nm
Dynamic efficiency (RD):	98%

Selection

Motor power ( $P_{1M}$ ):	0.25 kW
Output torque ( $M_{2M}$ ):	14 Nm
Service factor (f.s.):	1.4

Direction of rotation



Lubrication

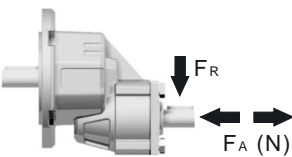
Oil quantity:	0.05l
AGIP:	Telium VSF 320
SHELL:	Omala S4 WE 320

On our website

<a href="#">Features</a>	<a href="#">Atex certification</a>
<a href="#">How to order</a>	<a href="#">Installation check list</a>
<a href="#">Dimension</a>	<a href="#">Spare parts list</a>
<a href="#">Accessories/options</a>	<a href="#">Complete catalogue</a>
<a href="#">Electric motors</a>	<a href="#">Selection by power (xls)</a>
<a href="#">Selection guide - fs</a>	
<a href="#">Mounting pos. - lubricant</a>	
<a href="#">Calc. the overhung load</a>	

Axial and radial loads

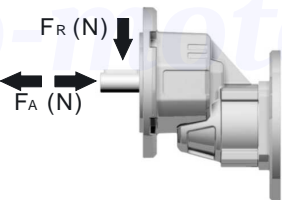
Input shaft



$n_2$ (min <sup>-1</sup> )	FA (N)	FR (N)
1400	168	840
900	192	962

\*Strong axial loads in the DX direction are not allowed

Output shaft



$n_2$ (min <sup>-1</sup> )	FA (N)	FR (N)
700	101	504
600	120	600
400	138	696
300	151	756
200	175	876
140	192	960

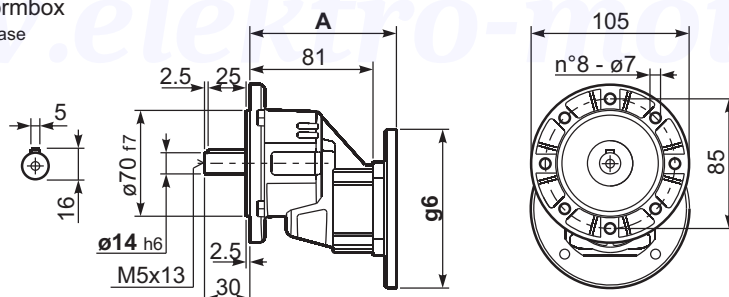
Note

**20Nm**

# 211A

**P<sub>211A-F</sub>...** Basic wormbox  
Riduttore base

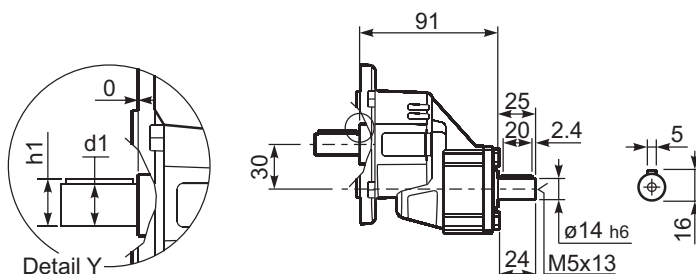
<b>Gearbox weight</b> peso riduttore	<b>1.40 kg</b>
---	----------------



B5 Motor Flanges	A	g6	kit code
63 B5	99.5	138	K050.4.041
71 B5	97	160	K050.4.042

<b>B14 Motor Flanges</b>	<b>A</b>	<b>g6</b>	<b>kit code</b>
56 B14	97	80	KC40.4.049
63 B14	99.5	90	K050.4.047
71 B14	97	105	K050.4.045

**R211A-F...** Basic wormbox  
Riduttore base



**\*Available output shaft** / Albero di uscita

	Shaft - d1	p1	h1	x
Standard	ø 14x30	5	16	M5x13