

### Input data

System of measurement		Metric
Input type		Coupling for electric motor
Input speed	[rpm]	1400
Output speed	[rpm]	107.28
Ratio (i=)		13.05
Frequency	[Hz]	50
Input options		IEC
Requested input power	[kW]	1.85
Service factor		3.4
Thermal power	[kW]	5.8

### Output data

#### Gear unit T C 90 B 12.5 90\_B5 V B3 H32

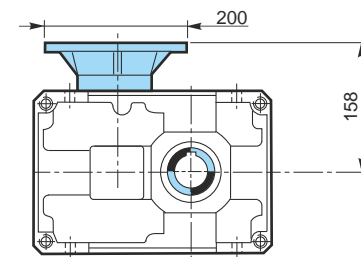
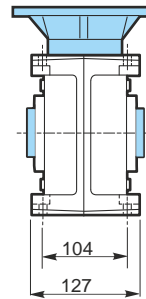
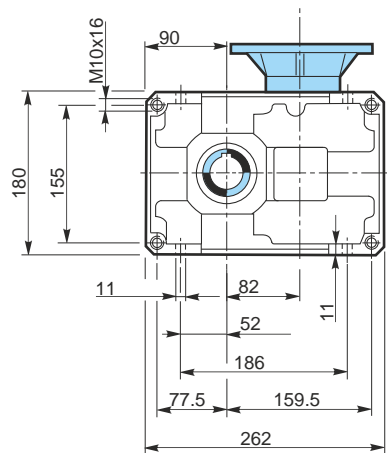
Type		T - Bevel helical gearboxes
Input type		C
Size		90B
Ratio (i=)		13.05
Input flange		B5
Mounting position		B3
Input speed	[rpm]	1400
Output speed	[rpm]	107.28
Rated output torque	[Nm]	156.45
Service Factor		3.4
Efficiency		0.95

#### Gear unit configuration

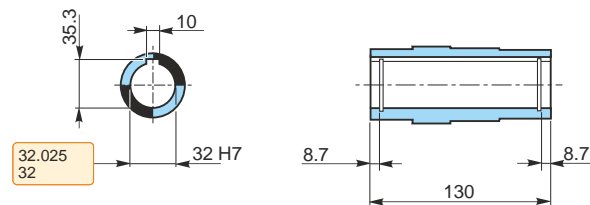
Output shaft		H32
Fixing		Universal

#### Electric motor coupling

Size		90 LB
Poles n.		4
Power	[kW]	1.85

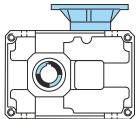


*Hollow output shaft*

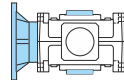
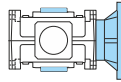


## Mounting positions

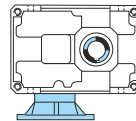
B3



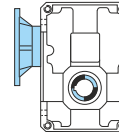
B6



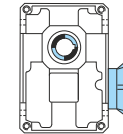
B8



VA



VB



B7



← Oil quantity [litres]

1

1

1.4

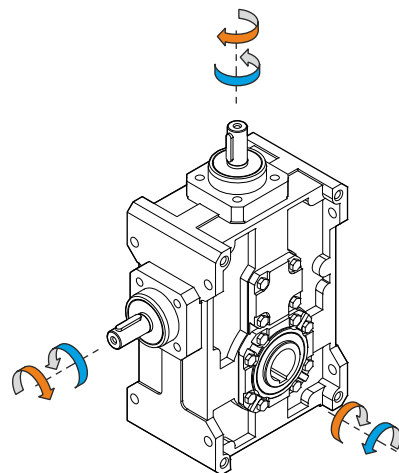
1.2

1.3

1.3

Lubricant type: Long life synthetic oil ISO VG320

## Direction of rotation



## Weight

Gear unit [kg]

25