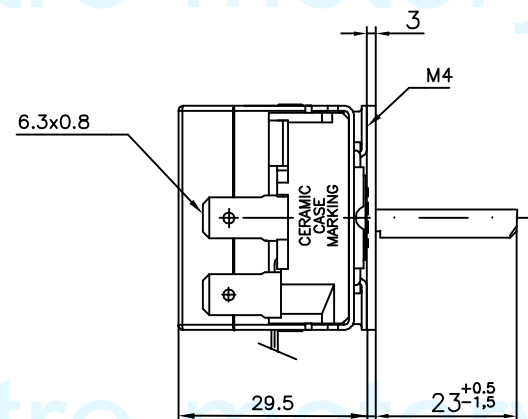
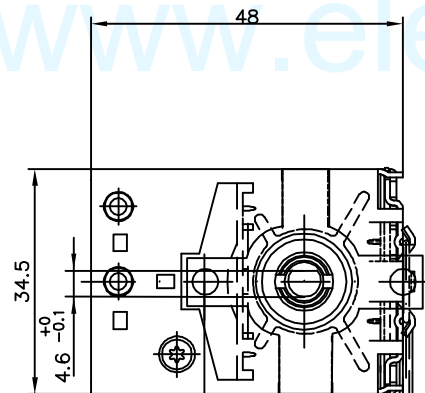
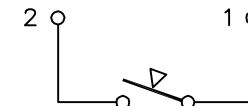


DIFERENTIAL	7°C±3
MAX. TEMPERATURE IN THE BOX	150 °C
MIN. TEMPERATURE IN THE BULB	-10 °C
MAX. TEMPERATURE IN THE BULB	330 °C
MIN. BENDING. RADIUS OF CAPILLARY	5 mm
DIELECTRIC STRENGTH	2000v 1s

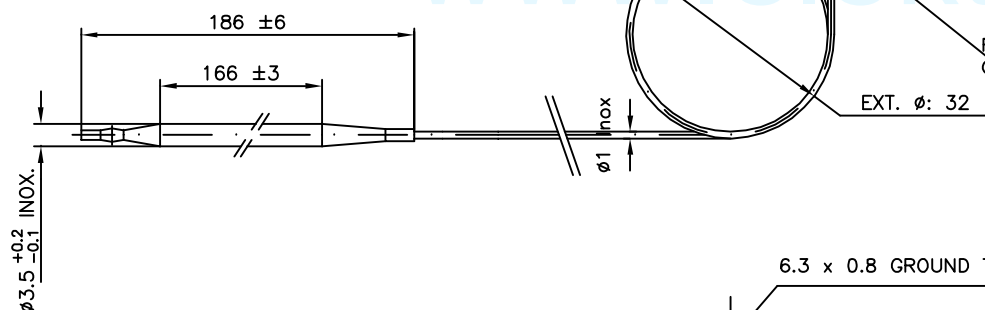


SWITCH DIAGRAM AT ZERO SETTING AND  
PHIAL TEMPERATURE 15°C



LOAD 1-2: 16A 250V / 10A 400V

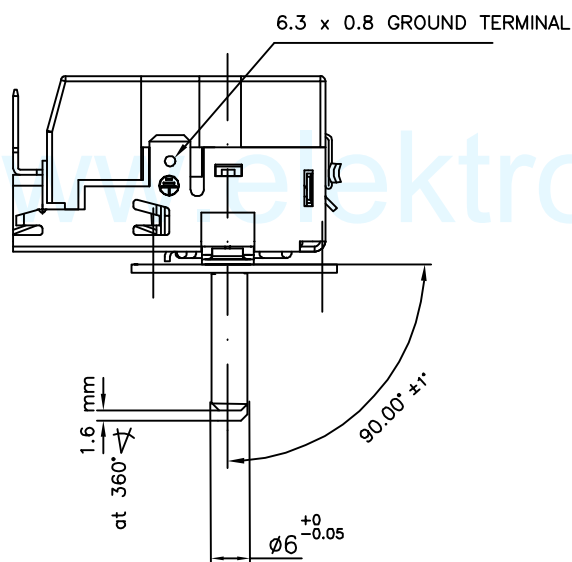
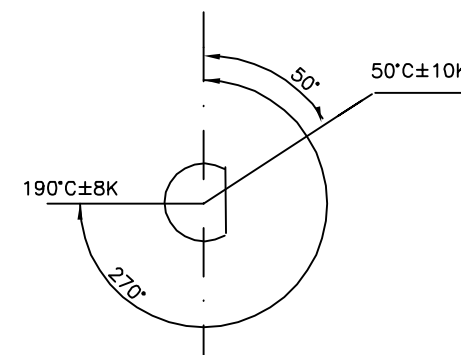
CAPILLARY LENGTH: 1200  $\begin{smallmatrix} +50 \\ -0 \end{smallmatrix}$  mm



FIBER-GLASS COVER: L=200  $\begin{smallmatrix} +50 \\ -0 \end{smallmatrix}$  mm  
COLOR: BLACK

EXT. Ø: 32

ADJUSTMENT



CERAMIC BOX PRINTING  
50-190 EIKA Reference  
T-150 Manufacture Date

NB: THE VALUES INDICATE  
SWITCH-OFF TEMPERATURES ( DISCONNECTION)

Pozinkovaný kříž

EIKA	<b>81381678</b>
CUSTOMER Ref.	
CUSTOMER	

N.	Aldaketaren azalpena	Data	Eglea	JAKUB
				05-14
	ELECTRIC THERMOSTAT	N°	<b>81381678</b>	