

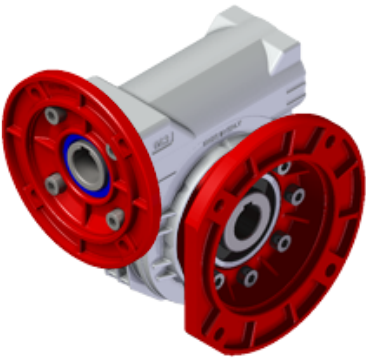
P050F112S0-RB3-

Price

Lead time

Configuration

Type:	P
Size:	050
Input:	80 B14 ø120
Output shaft/bore:	Special series ø24
Mounting:	F1
Mounting position:	B3
Input bore:	-
Coupling:	-



Technical data

Input rpm (n_1):	1400 min⁻¹
Output rpm (n_2):	46.67 min⁻¹
Ratio (i):	30.00
Nominal power (P_{1R}):	0.50 kW
Nominal torque (M_{2R}):	72 Nm
Dynamic efficiency (RD):	70%

Selection

Motor power (P_{1M}):	0.55 kW
Output torque (M_{2M}):	79 Nm
Service factor (f.s.):	0.9

Direction of rotation



Lubrication

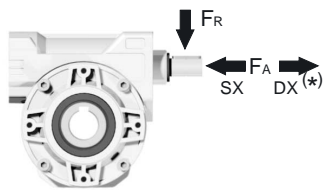
Oil quantity:	0.14l
AGIP:	Telium VSF 320
SHELL:	Omala S4 WE 320

On our website

Features	Irreversibility
How to order	Thermal limit
Dimension	Atex certification
Accessories/options	Installation check list
Electric motors	Spare parts list
Selection guide - fs	Complete catalogue
Mounting pos. - lubricant	Selection by power (xls)
Calc. the overhung load	

Axial and radial loads

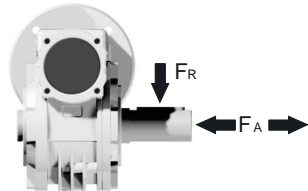
Input shaft



n_2 (min ⁻¹)	FA (N)	FR (N)
1400	76	380

*Strong axial loads in the DX direction are not allowed

Output shaft



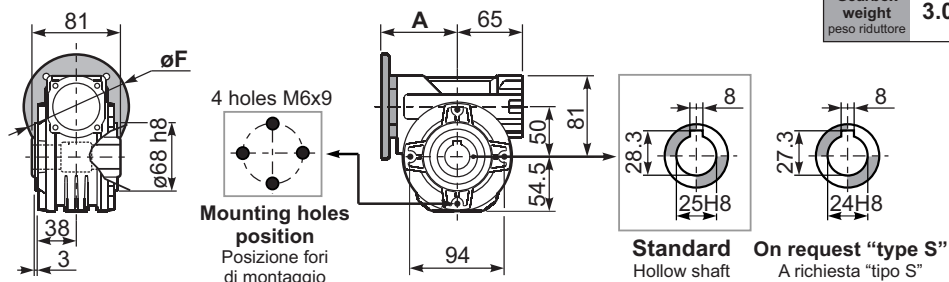
n_2 (min ⁻¹)	FA (N)	FR (N)
200	240	1200
150	280	1400
100	300	1500
75	340	1700
50	380	1900
25	480	2500
15	560	2800

Note

3D dimensions on the Web

P050**FB**... Basic wormbox
Riduttore base

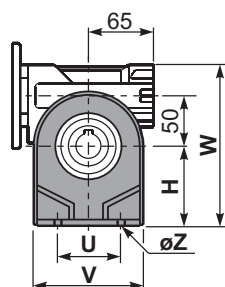
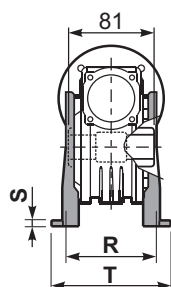
M. flanges	Kit code	øF	A
63B5	K050.4.041	138	78.5
71B5	K050.4.042	160	76
80B5	K050.4.043	200	76.5
56B14	KC40.4.049	80	76
63B14	K050.4.047	90	78.5
71B14	K050.4.045	105	76
80B14	K050.4.046	120	76.5



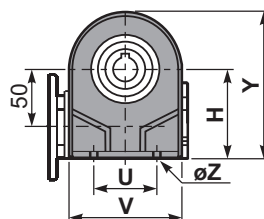
Gearbox weight
peso riduttore **3.00 kg**

1

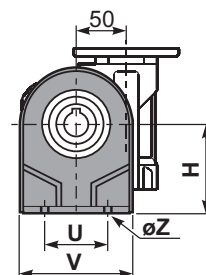
P050**PA**... Feet
Piedini



P050**PB**... Feet
Piedini

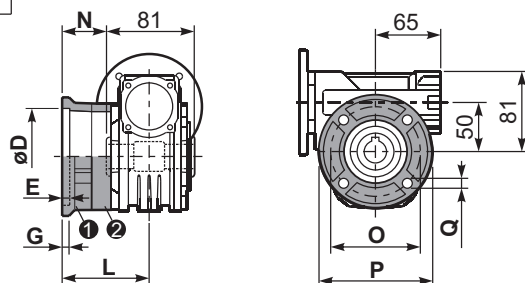


P050**PV**... Feet
Piedini



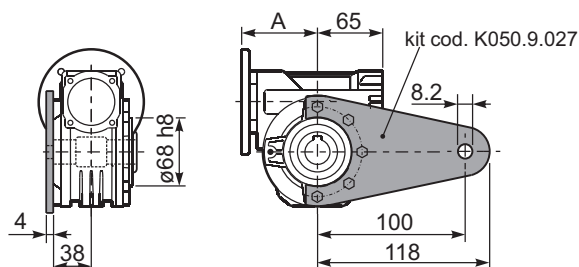
	H	R	S	T	U	V	Y	W	øZ	kit code
type B	82	98.5	3.5	123	63	113	138.5	163	ø10.5	K050.9.022
type S	85	96	10	114	85	110	139.5	166	ø10	KS050.9.023

P050**FC**... Output flange
Flangia uscita



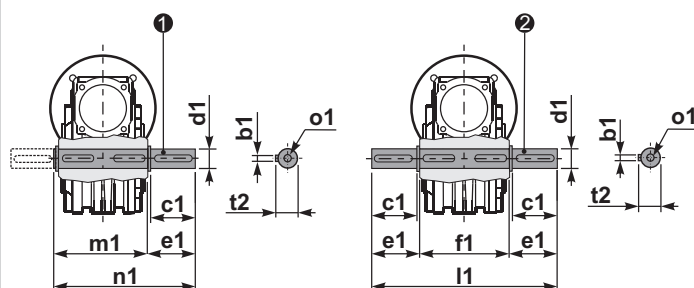
type B	øD	E	G	L	N	O	P	Q	kit code
FC	70 ^{+0.20} _{+0.15}	9	12	85	44.5	90	123	10.5	① K050.9.010 ② -
FL	70 ^{+0.20} _{+0.15}	9	12	114.5	74	90	123	10.5	① K050.9.010 ② K050.0.200
type S	øD	E	G	L	N	O	P	Q	kit code
F1	110 ^{+0.20} _{+0.15}	4	11	83.5	43	130	160	10	① KS050.9.012 ② -
F2	70 ^{+0.20} _{+0.15}	9	12	76.5	36	90	123	10.5	① KS050.9.014 ② -
F3	95 ^{+0.035} ₀	4	10	66.5	26	115	140	10	① KS050.9.013 ② -

P050**BR**... Reaction arm
Braccio di reazione



P050.....**S**... Single Shaft
Albero lento semplice

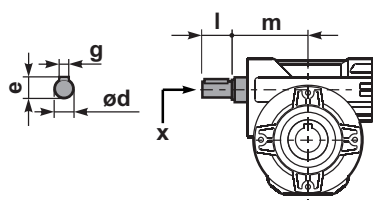
P050.....**D**... Double Shaft
Albero lento bisp.



① kit cod. K050.5.028 type B
kit cod. KS050.5.030 type S

② kit cod. K050.5.029 type B
kit cod. KS050.5.031 type S

R050**FB**... Input shaft
Albero in entrata



	ød	e	g	l	m	x	kit code
type B	16 h6	18	5	30	74.5	M6x16	① K050.5.006 PAM71 ② K050.5.007 PAM80
type S	14 h6	16	5	30	74.5	M5x10	① KS050.5.008 PAM71 ② KS050.5.009 PAM80

	b1	c1	d1	e1	f1	l1	m1	n1	t2	o1
type B	8	52	25 ^{-0.005} _{-0.020}	59.5	81	200	86.5	146	28	M8x20
type S	8	50	24 ^{-0.005} _{-0.020}	68.8	81	218	86.5	155	27	M8x20